

# Access to the Hotel



FROM PARIS - A4 MOTORWAY: "Val d'Europe" Exit 12.1  
At the roundabout, take the 3<sup>rd</sup> exit, in the direction of "Quartier de la gare". Turn right at the traffic light.

FROM METZ-NANCY - A4 MOTORWAY: "Parc Disney" Exit 14  
At the roundabout, take the 3<sup>rd</sup> exit, in the direction of "Serris", go straight.  
Turn left at the traffic light. The hotel is on the left hand-side at the end of the road.

**HOTEL L'ÉLYSÉE VAL D'EUROPE** ★★

7, cours du Danube 77700 Serris  
Tel: +33 (0) 1 64 63 33 33 • Fax: +33 (0) 1 64 63 33 30  
[www.hotelelysee.com](http://www.hotelelysee.com)  
Email: [info@hotelelysee.com](mailto:info@hotelelysee.com)

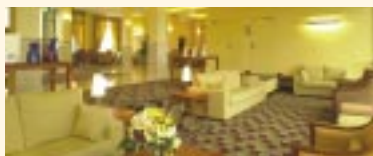
# Comfort and Elegance

Designed in the “grand boulevard” style, the Hotel l’Elysée Val d’Europe offers visitors an authentic Parisian setting combining elegance and style with first-rate services and amenities, just 30 minutes away from Paris.



Located in the heart of Val d’Europe’s city centre, The Hotel l’Elysée Val d’Europe is centrally located between Disneyland® Resort Paris, the Val d’Europe Shopping Centre, The Sealife Aquarium and the “La Vallée Village” with 75 stores.

Offering a high level of comfort and refinement, the Hotel l’Elysée Val d’Europe is your new address for leisure and business stays.



Equipped with every facility to ensure the success of your corporate events, the Hotel l’Elysée Val d’Europe is the ideal location for seminars and conferences, with spacious volumes and pleasant lighting.

It’s also the ultimate site for weddings and banquets adapted to the size of your event.



# Leisure Activities

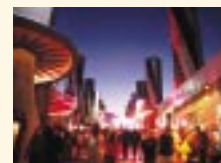
Disneyland® Park: five imaginary lands, all wonderfully different! Discover a place that’s pure enchantment for the whole family. A place where there’s always something new to see and do, a place where dreams really do come true.



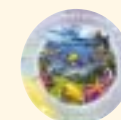
Walt Disney Studios® Park: Take a behind-the-scenes trip into the fascinating worlds of cinema, animation and television. Excitement at every turn!



Disney® Village: an entertainment centre unique in Europe, is one place you simply cannot miss.



Come face to face with thousands of fascinating creatures. There’s fun for all the family including talks, feeding displays, touch pools, interactivity for children. 10’ walk from l’Elysée Val d’Europe Hotel inside the prestigious Commercial Center, area “Les Terrasses”.



Discover the latest, trendiest address for designer discount shopping. In a relaxed setting with a unique décor, you’ll find last season’s collections of the top names in fashion discounted by at least 33% (on suggested retail price).



Entirely devoted to shopping pleasure and well-being, this centre marks the dawn of a new, friendly relationship with its visitors. Over 130 outlets!

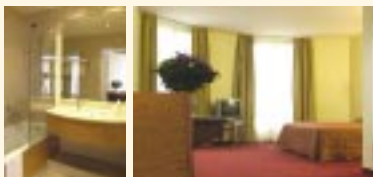


# Amenities

## Air-conditioned rooms and suites

with:

- Safety deposit box
- Private bathroom with hair dryer
- Cable television with international channels
- Direct dial telephone with voice messaging
- WIFI Internet access
- Modem Internet connection
- Individual air-conditioning



**The Pop Art Restaurant**  
Sun terrace in Summer

**The Bar**  
Big Flat TV screen for all sports and entertainments events.



- Laundry Service
- Indoor garden
- Video Games room and Indoor Children's corner
- Currency Exchange
- Covered Car Park
- 200 m<sup>2</sup> of meeting and banquet rooms divisible into 3 rooms
- 4 sub-committee rooms on the upper floors can each accommodate up to 10 people
- Free shuttle to Disney Parks and Disney Village



# Meetings

With its excellent geographic location (30 minutes from Paris by Val d'Europe RER railway station, 5 minutes from the TGV and Eurostar station of Marne la Vallée-Chessy), the Hôtel l'Elysée Val d'Europe is ideally suited for business meetings, exhibitions, conferences, receptions, banquets or business dining.

The salons and meeting rooms of the Hotel l'Elysée Val d'Europe can be adapted to all types of events:

- 3 soundproofed, air-conditioned salons with natural day light and equipped with direct telephone lines and WIFI Internet Access,



sound and audiovisual projections (integrated screen, video projector, microphones).


- Floral decoration and full sound and audiovisual equipment on request.
- Teambuilding and Incentives.
- Free shuttle to Disney Parks.
- Customised cost estimates.

4 syndicate rooms each accommodating up to 10 people are located on the upper floors.



# Dimensions and Capacities

# The Pop Art Restaurant

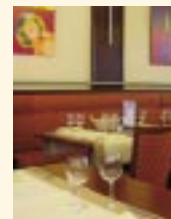
	Surface	Dimensions	Banquet	Theater	Class-room	U-shape
<b>Salon CARNOT</b>						
	67 m <sup>2</sup>	6,42x10,50	50	60	40	30
<b>Salon MARCEAU</b>						
	62 m <sup>2</sup>	5,94x10,50	50	60	40	30
<b>Salon HOICHE</b>						
	42 m <sup>2</sup>	4,00x10,50	20	38	20	22
<b>Salons CARNOT + MARCEAU</b>						
	143 m <sup>2</sup>	13,60x10,50	120	140	80	52
<b>Salons MARCEAU + HOICHE</b>						
	117 m <sup>2</sup>	11,20x10,50	70	94	60	44
<b>Salon ESPACE ELYSÉE (SALONS CARNOT + MARCEAU + HOICHE)</b>						
	199 m <sup>2</sup>	18,90x10,50	150	180	106	62

Rates on request.

The newly opened, contemporary Pop Art Restaurant sits in the exciting city of Val d'Europe. In the heart of the "Place d'Ariane", the Pop Art restaurant greets its clientele in a charming and pleasant environment.



Take a break and enjoy your meal at Pop Art restaurant. Taste its creative French cuisine and delicate service,



in a "Pop Art" atmosphere. Sun terrace in Summer.

In the spacious, well-lit Pop Art Restaurant, you can savour the delicious and original specialities of our talented chef. Try the delightful



Salade with Pancetta and Parmesan, the remarkable Poultry stir-fried "Wok style" with 4-spice powder and linguine and the famous "Chocolate Tower".

